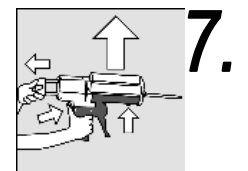
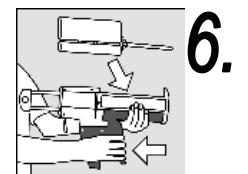
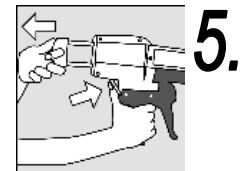
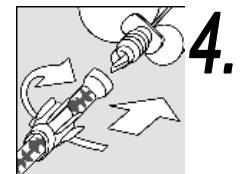
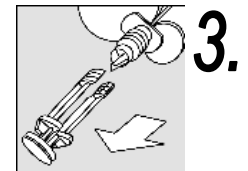
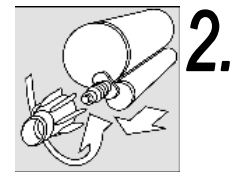
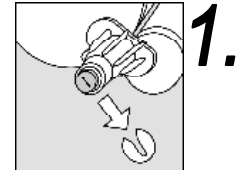


## Application guideline for epple-easy products

Our epple-easy products are characterized by their very comfortable handling. A few things should nevertheless be observed:

- a) The material can only be applied with the appendant mastic gun (either manually or pneumatically).
- b) Application/dosage has to take place by means of the assigned blender.
- c) The material is to be applied at temperatures between 10 ° C and 35 ° C.
- d) Please proceed step-by-step:



Picture 1: Unscrew the coupling nut with a few turns in order to detach the green plug. Then turn back the coupling nut in a half turn in clockwise direction. This facilitates to push off the steel disk.

Picture 2: Unscrew the coupling nut.

Picture 3: Pull out the green plug.

Picture 4: Attach the blender to the cartridge and screw tightly with the coupling nut. Please make sure that the notch of the blender fits into the counterpart at the cartridge.

Picture 5: Pull the cartridge piston back (see description of mastic gun).

Picture 6: Place the cartridge into the allocated track of the gun. Pump several times whilst holding the cartridge upright until the material drops out from the cone end. This makes sure that possible bubbles are completely displaced. Please do not use the first 10 – 15 g of the product, as a homogeneous mixture is not reached till then. Then apply the product to the designated spot (component, surface).

Picture 7: In the case that the mixing system will not be needed for a longer period of time, the blender may nevertheless remain on the cartridge. Just take the cartridge out of the gun and leave it upright. When using the system again, the blender needs to be replaced. After removal of the blender, please make sure that the intersection between the cartridge and the blender is free from incrustations, as they could partially plug the vents and therewith obstruct the flowing of the two components into the mixing tube. In such a case, please remove the incrustations by means of a pointed object (e. g. with a screwdriver or similar). Then attach a new blender and proceed as described on picture 4.

- e) When using epple-easy 5000, the blender should be removed after application. Insert the green plug and tighten again by means of the coupling nut. Then clip on the steel disk again, so that extraction of the green plug at a later stage becomes easier. When using the system again, please proceed as described as from d). With longer storage time, epple-easy 5000-cartridges should be stored in vertical position.